

# VB-501



## PVB – Pressure Vacuum Breaker

The Pressure Vacuum Breaker VB-501 is designed to provide maximum protection against backflow caused by backsiphonage or backpressure. Backflow may cause infiltration of chemicals, fertilizers and/or other pollutants into potable water systems.

The VB-501 is reliable and easily maintained, without the need for special tools.

### Features

Sizes: 1/2", 3/4", 1"

Maximum working pressure: 175 psi / 12.5 bar

Maximum working temperature: 140° F / 60° C

End connections: threaded NPT - ANSI B1.20.1

### Specifications

The Pressure Vacuum Breaker is ASSE 1020 approved, and supplied with full port ball valves. The main body and bonnet are made of reinforced nylon.

The entire assembly is accessible for maintenance and testing without removing the device from the line.

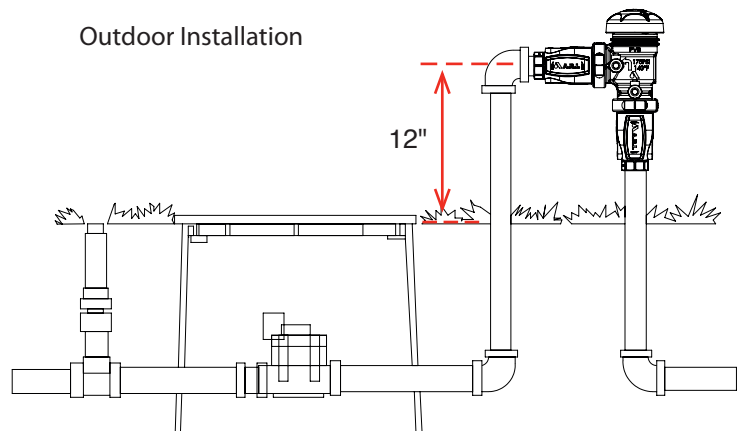
The Pressure Vacuum Breaker is a A.R.I. VB-501.

\* Always consult local codes for installation methods, approvals and guidance. A.R.I. recommends an annual test for any Backflow Preventer

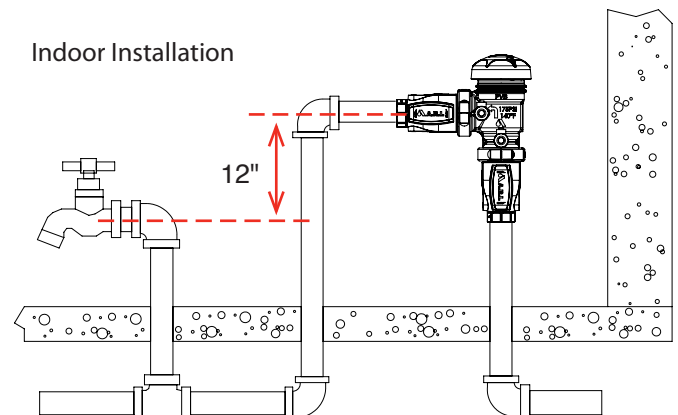
### Installation & Maintenance

Local codes shall govern installation requirements. Unless otherwise specified, the assembly shall be mounted at a minimum of 12" (305mm) above the highest piping or outlet downstream of the device. Install with adequate drain and sufficient side clearance for testing and maintenance.

Outdoor Installation



Indoor Installation

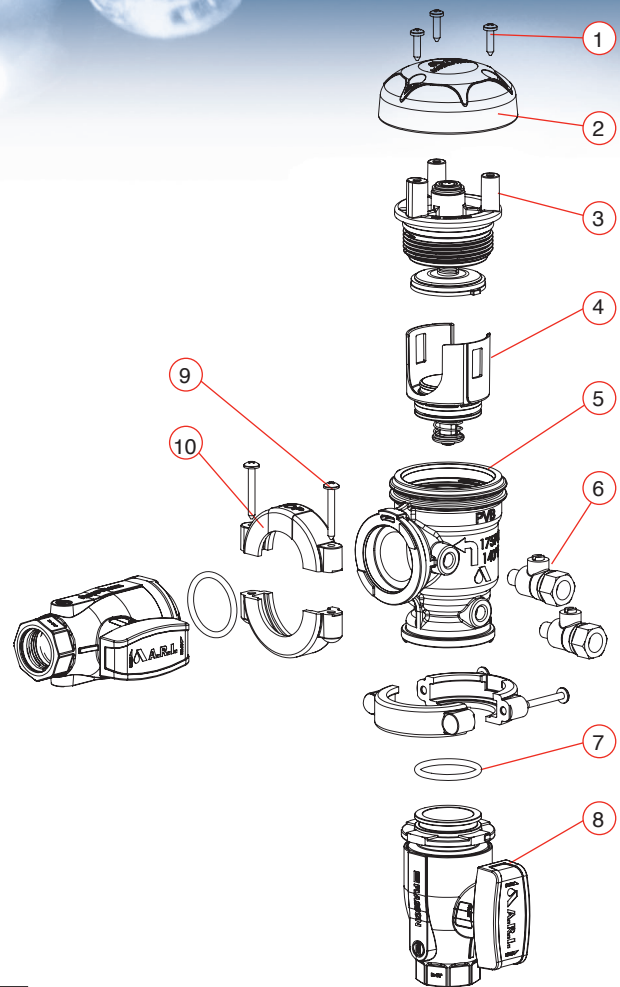


Direction Of Flow



## PARTS LIST AND SPECIFICATION

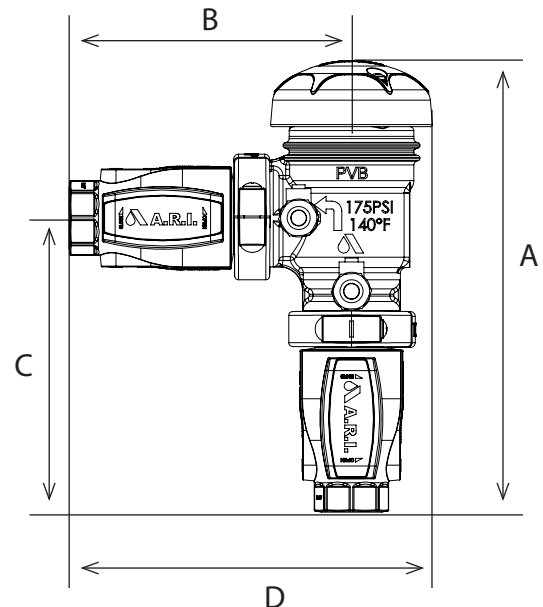
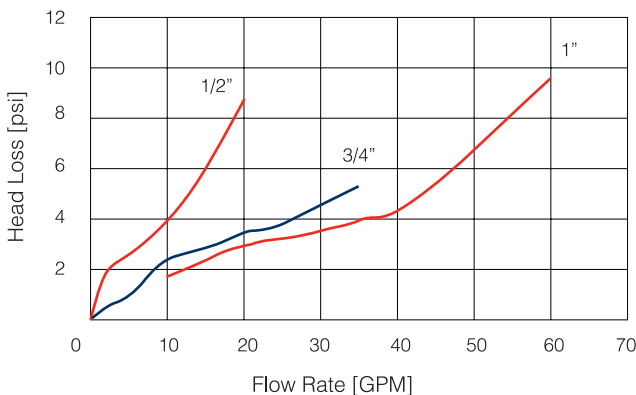
No.	Part	Material	Qty.
1	Cover Bolts	STST 304	3
2	Cover	PP	1
3	Vent Assembly		1
3.1	Seat	Reinforced PA	
3.2	Piston	Acetal	
3.3	Seal	EPDM	
3.4	Sleeve	Reinforced PA	
3.5	Plug	Acetal	
3.6	Spring	STST 302	
4	Check Valve Assy.		1
4.1	Seat	Acetal	
4.2	Seal	EPDM	
4.3	O-ring	NBR	
4.4	Spring	STST 302	
4.5	Piston	Acetal	
5	Body	Reinforced PA	1
6	Test Cock	Brass	2
7	O-ring	NBR	2
8	Ball Valve	Reinforced PA	2
9	Band Bolts	STST 304	4
10	Band Assy.	Reinforced PA	2



## DIMENSIONS AND WEIGHT

Size	Dimensions in.				Weight lb.
	A	B	C	D	
1/2"	9.92	6.50	6.77	8.11	2.14
3/4"	9.92	6.50	6.77	8.11	2.12
1"	10.59	7.56	7.44	8.82	2.43

## HEAD LOSS



UBS - A.R.I. [www.ubsbackflow.com](http://www.ubsbackflow.com) [chart@ubsbackflow.com](mailto:chart@ubsbackflow.com) Tel. +19549809850

A.R.I. FLOW CONTROL ACCESSORIES Ltd. reserves the right to make product changes without prior notice. To insure receiving updated information on parts specifications, please call the export dept. at the A.R.I. factory. A.R.I. FLOW CONTROL ACCESSORIES Ltd. shall not be held liable for any errors. All rights reserved.